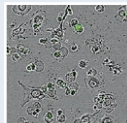


## CELL HEALTH ASSAYS

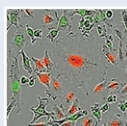
### Apoptosis & Cytotoxicity



Visualize and measure apoptotic cell death and cytotoxicity using the IncuCyte<sup>®</sup> range of no-wash, mix and read reagents.

Product	Quantity	Cat. No.
IncuCyte <sup>®</sup> Caspase-3/7 Apoptosis Reagent	One vial: 20 µL/vial	4440
IncuCyte <sup>®</sup> Annexin V Red Reagent	One vial: 100 tests	4641
IncuCyte <sup>®</sup> Annexin V Green Reagent	One vial: 100 tests	4642
IncuCyte <sup>®</sup> Cytotox Red Reagent	Five vials: 5 µL/vial	4632
IncuCyte <sup>®</sup> Cytotox Green Reagent	Five vials: 5 µL/vial	4633

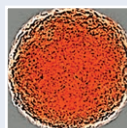
### Proliferation - Cell Count



IncuCyte<sup>®</sup> NuLight live-cell labeling reagents enable real-time counting of viable cells over hours, days and weeks. Calculate growth rates and doubling times, explore co-cultures and multiplex.

NuLight Live-Cell Labeling Reagents	Quantity	Cat. No.
NuLight Red BacMam 3.0 Reagent	One vial: 1 mL	4621
NuLight Green BacMam 3.0 Reagent	One vial: 1 mL	4622
NuLight Green Lentivirus (EF-1 Alpha Promoter, Puromycin selection)	One vial: 0.2 mL	4624
NuLight Red Lentivirus (EF-1 Alpha Promoter, Puromycin selection)	One vial: 0.2 mL	4625
NuLight Green Lentivirus (EF-1 Alpha Promoter, Bleomycin selection)	One vial: 0.2 mL	4626
NuLight Red Lentivirus (EF-1 Alpha Promoter, Bleomycin selection)	One vial: 0.2 mL	4627
NuLight Green Lentivirus (EF-1 Alpha Promoter, Puromycin selection)	One vial: 0.6 mL	4475
NuLight Red Lentivirus (EF-1 Alpha Promoter, Puromycin selection)	One vial: 0.6 mL	4476
NuLight Green Lentivirus (EF-1 Alpha Promoter, Bleomycin selection)	One vial: 0.6 mL	4477
NuLight Red Lentivirus (EF-1 Alpha Promoter, Bleomycin selection)	One vial: 0.6 mL	4478

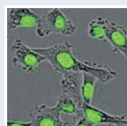
### Spheroids



IncuCyte<sup>®</sup> CytoLight live-cell labeling reagents enable real-time measurement of spheroid growth and shrinkage.

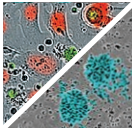
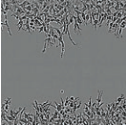
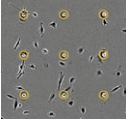
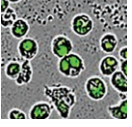
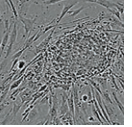
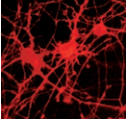
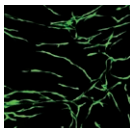
CytoLight Live-Cell Labeling Reagents	Quantity	Cat. No.
CytoLight Green Lentivirus (EF-1 Alpha Promoter, Puromycin selection)	One vial: 0.6mL	4481
CytoLight Red Lentivirus (EF-1 Alpha Promoter, Puromycin selection)	One vial: 0.6mL	4482

### IncuCyte<sup>®</sup> NuLight Cell Lines



NuLight pre-labeled cell lines can be used to measure a range of cell processes in real-time including cell proliferation (nuclear count) and viable cell numbers in apoptosis and cytotoxicity studies.

Product	Quantity	Cat. No.
A549 NuLight Green Cells	One vial: 1x10 <sup>6</sup> cells/vial	4492
A549 NuLight Red Cells	One vial: 1x10 <sup>6</sup> cells/vial	4491
HeLa NuLight Green Cells	One vial: 1x10 <sup>6</sup> cells/vial	4490
HeLa NuLight Red Cells	One vial: 1x10 <sup>6</sup> cells/vial	4489
HT-1080 NuLight Green Cells	One vial: 1x10 <sup>6</sup> cells/vial	4486
HT-1080 NuLight Red Cells	One vial: 1x10 <sup>6</sup> cells/vial	4485
Jurkat NuLight Red Cells	One vial: 1.5x10 <sup>6</sup> cells/vial	4613
MCF7 NuLight Green Cells	One vial: 1x10 <sup>6</sup> cells/vial	4528
MCF7 NuLight Red Cells	One vial: 1x10 <sup>6</sup> cells/vial	4524
Neuro-2a NuLight Green Cells	One vial: 2x10 <sup>6</sup> cells/vial	4511
Neuro-2a NuLight Red Cells	One vial: 2x10 <sup>6</sup> cells/vial	4512
THP-1 NuLight Red Cells	One vial: 1x10 <sup>6</sup> cells/vial	4612

<b>Immune Cell Killing, Clustering &amp; Proliferation</b>		<b>Product</b>	<b>Quantity</b>	<b>Cat. No.</b>	
	Directly measure tumor cell killing and proliferation in real time.	IncuCyte® Caspase-3/7 Apoptosis Reagent	One vial: 0.02 mL	4440	
		NucLight Red Lentivirus	One vial: 0.6 mL	4476	
<b>Cell Migration &amp; Invasion</b>		<b>Product</b>	<b>Quantity</b>	<b>Cat. No.</b>	
	ImageLock™ plates enable precise, scan-to-scan repeat imaging of the same field of view. Cool boxes and accessories enable fine temperature control of biomatrices.	ImageLock™ 96-well Plates	50 plates	4379	
		IncuCyte® Cell Invasion Accessories	One kit	4444	
<b>Chemotaxis</b>		<b>Product</b>	<b>Quantity</b>	<b>Cat. No.</b>	
	A novel, integrated solution for real-time visualization and automated analysis of chemotactic cell migration in a 96-well format.	IncuCyte® ClearView 96-Well Cell Migration Plate	1 plate	4582	
		IncuCyte® ClearView 96-Well Cell Migration Plates – Case of 50 Plates	50 plates	4599	
		IncuCyte® ClearView Reservoir Plate	10 plates	4600	
		IncuCyte® ClearView Reservoir Plate – Case of 100 Plates	100 plates	4601	
<b>Phagocytosis</b>		<b>Product</b>	<b>Quantity</b>	<b>Cat. No.</b>	
	Visualize and quantify the phagocytosis of cells or Bioparticles® in real time with pH sensitive pHrodo® indicators.	IncuCyte® pHrodo® Red Cell Labeling Kit	One Kit	4649	
		IncuCyte® pHrodo® Red <i>E. coli</i> Bioparticles®	One vial: 2 mg	4615	
		IncuCyte® pHrodo® Green <i>E. coli</i> Bioparticles®	One vial: 2 mg	4616	
		IncuCyte® pHrodo® Red Zymosan Bioparticles®	One vial: 1 mg	4617	
		IncuCyte® pHrodo® Green Zymosan Bioparticles®	One vial: 1 mg	4618	
		IncuCyte® pHrodo® Red <i>S. aureus</i> Bioparticles®	One vial: 2 mg	4619	
		IncuCyte® pHrodo® Green <i>S. aureus</i> Bioparticles®	One vial: 2 mg	4620	
<b>Stem Cell Monitoring &amp; Reprogramming</b>		<b>Product</b>	<b>Quantity</b>	<b>Cat. No.</b>	
	Physically mark vessels for colony selection and maintenance using our pen tool accessory for IncuCyte® ZOOM.	IncuCyte® ZOOM Plate Marking Tool	One tool	4534	
		IncuCyte® ZOOM Marking Tool Replacement Pens	Two pens	4540	
<b>Neurite Dynamics - Mono &amp; Co-culture</b>		<b>Product</b>	<b>Quantity</b>	<b>Cat. No.</b>	
	Neuron specific live-cell labeling reagents, cell kits and pre-labeled cells. Measure neurite outgrowth and retraction in monoculture or co-culture.	NeuroLight Red™ Lentivirus - Synapsin Promotor	One vial: 0.45mL	4584	
		IncuCyte® NeuroPrime Cell Kit	One kit	4585	
		Neuro-2a NucLight Green Cells	One vial: 2x10 <sup>6</sup> cells/vial	4511	
		Neuro-2a NucLight Red Cells	One vial: 2x10 <sup>6</sup> cells/vial	4512	
<b>Angiogenesis</b>		<b>StemKit (GFP-labeled ECFC and ADSC co-culture model)</b>	<b>Quantity</b>	<b>Cat. No.</b>	
	Measure vascular tube formation using our range of human co-culture angiogenesis assay kits and components.	IncuCyte® Angiogenesis 96-well StemKit	One kit	4507	
		IncuCyte® Angiogenesis StemKit VEGF/Suramin Supplement Kit	Two vials	4509	
		IncuCyte® Angiogenesis StemKit bFGF/Suramin Supplement Kit	Two vials	4510	
		IncuCyte® Angiogenesis Optimized StemKit Assay Medium	One bottle: 100 mL	4542	
		<b>PrimeKit (GFP-labeled HUVEC and NHDF co-culture model)</b>		<b>Quantity</b>	<b>Cat. No.</b>
		IncuCyte® Angiogenesis 96-well PrimeKit	One kit	4452	
IncuCyte® Angiogenesis PrimeKit VEGF/Suramin Supplement Kit	Two vials	4437			
IncuCyte® Angiogenesis PrimeKit EGF/Suramin Supplement Kit	Two vials	4439			
IncuCyte® Angiogenesis PrimeKit bFGF/Suramin Supplement Kit	Two vials	4438			
IncuCyte® Angiogenesis PrimeKit Optimized Assay Medium	One bottle: 125 mL	4541			
	HUVEC CytoLight Green Cells	One vial: 1.7x10 <sup>5</sup> cells/vial	4453		
	CytoLight Green Lentivirus (CMV Promoter, no selection)	One vial: 0.6mL	4513		

Learn more at [essenbioscience.com/consumables](http://essenbioscience.com/consumables)

Or contact us at [sales@essenbio.com](mailto:sales@essenbio.com)